

440 Ballina Road Goonellabah

Table of Contents

- | [Property Details](#)
- | [Photo Gallery](#)
- | [Map](#)
- | [Contact For Inspection](#)

Property Details

440 Ballina Road, Goonellabah



SOLD BY THE WAL MURRAY TEAM

4  2  4 

Step into this charming and grand home, perched on an elevated position that offers breathtaking views of the surrounding mountain ranges. Designed for both families and entertainers, this property will tick many boxes.

The formal lounge welcomes you with soaring ceilings, timber floors and air-conditioning, creating an inviting atmosphere. 4 spacious bedrooms, all enhanced by the beauty of polished timber floors plus a recently renovated main bathroom providing a modern look, with a design to be elderly friendly.

With sustainability in mind, the home includes solar hot water and a 24-panel solar power system, reducing energy costs and promoting an eco-friendly lifestyle.

The enclosed sunroom offers extra living space, where you can relax and enjoy the views in comfort, no matter the season..

Step outside to a large inground pool, perfect for refreshing dips or hours of fun, with a covered BBQ area conveniently located nearby for family gatherings and outdoor entertaining. The property also features a double lock-up garage and a double carport, providing ample parking space for vehicles and guests. For those who love projects or need additional storage, there are ample storage and workshop areas, complete with an adjacent second bathroom for added convenience.

- 4 Bedrooms
- 2 Bathrooms
- 2 Garages
- 2 Carports
- Air Conditioning
- In Ground Pool
- Balcony
- Floor boards
- Fully Fenced
- Built In Robes
- Dishwasher

\$719,000

Photo Gallery





first national
Wal Murray & Co



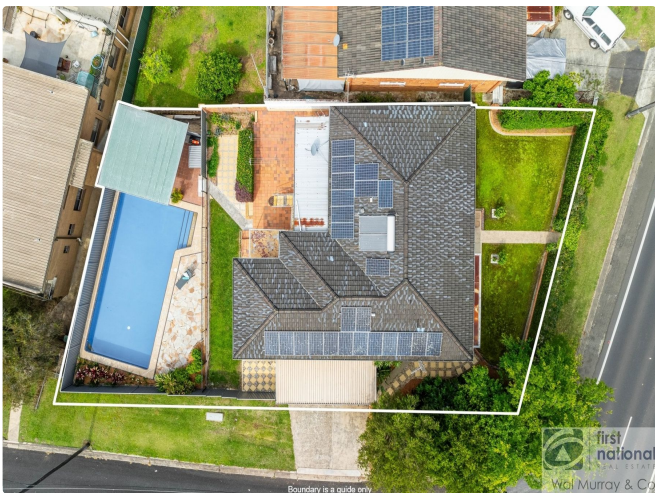
first national
Wal Murray & Co



first national
Wal Murray & Co



first national
Wal Murray & Co



Boundary is a guide only

first national
Wal Murray & Co

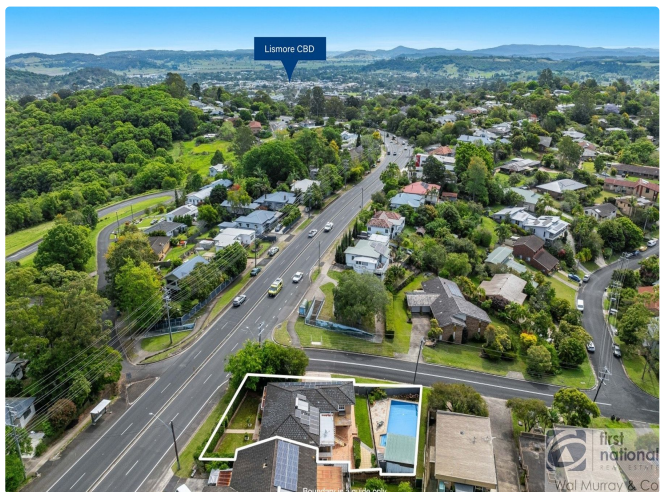


first national
Wal Murray & Co



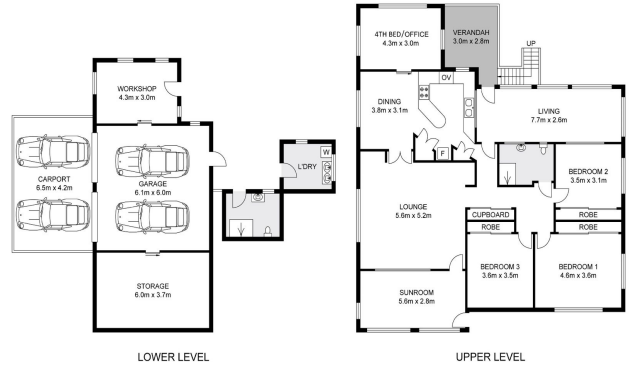
Southern Cross University
East Lismore Bowling Club

first national
Wal Murray & Co



Lismore CBD

first national
Wal Murray & Co

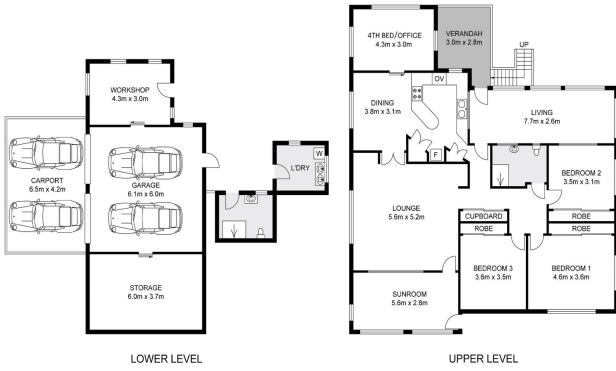


Dimensions are approximate. All information contained herein gathered from sources we believe to be reliable. However we cannot guarantee its accuracy and interested persons should rely on their own enquiries. © Melbourne, vision 2024.

440 Ballina Road, Goonellabah

INT : 184.6m²
 EXT : 9.2m²
 CARPORT : 27.3m²
 GARAGE/STORAGE/WORKSHOP : 72.7m²

First National
 Wal Murray & Co



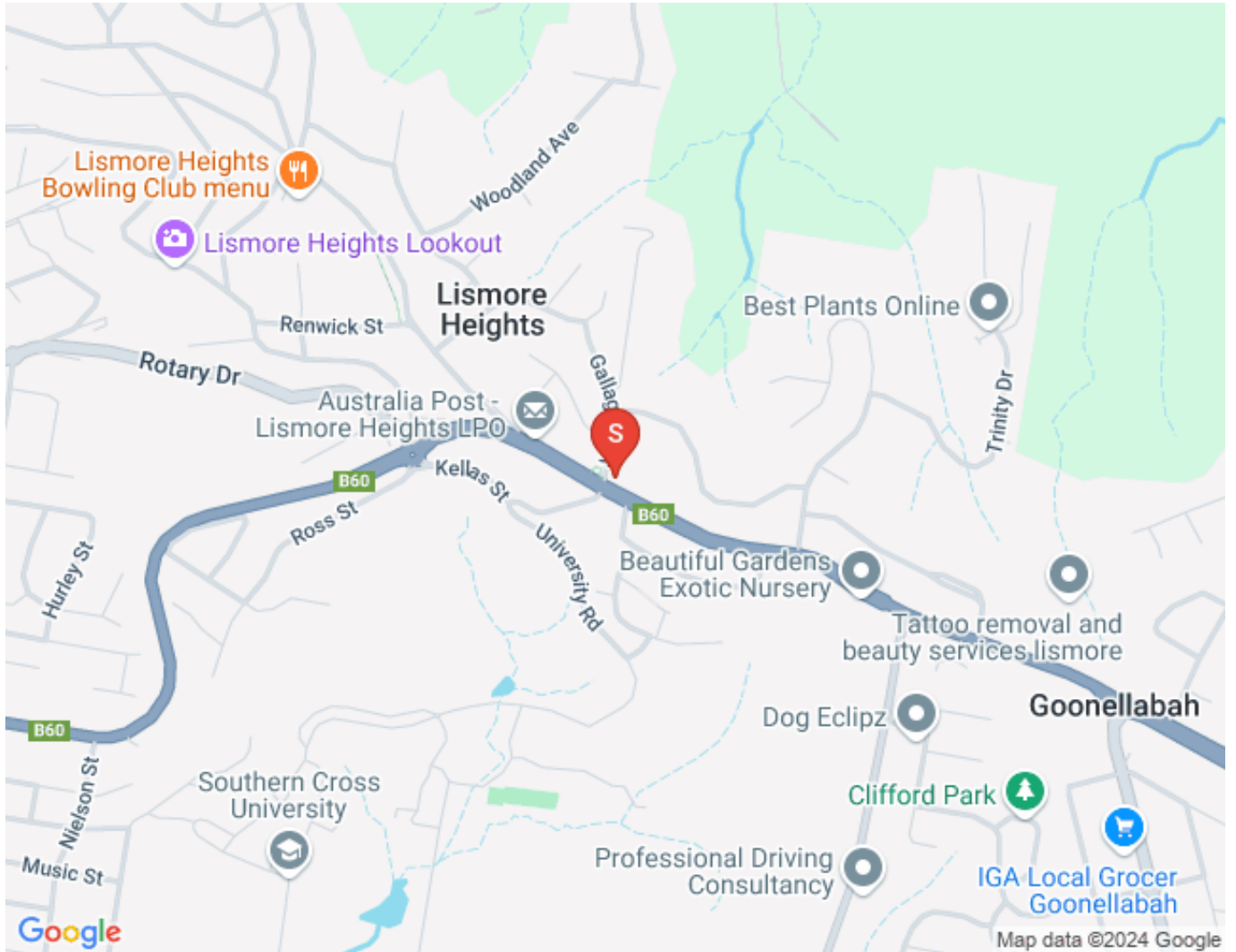
Dimensions are approximate. All information contained herein gathered from sources we believe to be reliable. However we cannot guarantee its accuracy and interested persons should rely on their own enquiries. © Melbourne, vision 2024.

440 Ballina Road, Goonellabah

INT : 184.6m²
 EXT : 9.2m²
 CARPORT : 27.3m²
 GARAGE/STORAGE/WORKSHOP : 72.7m²

First National
 Wal Murray & Co

Map



Contact For Inspection



BENJAMIN CONTE

LICENSED REAL ESTATE AGENT

0408 368 913

ben@walmurray.com.au